

Personal use only



SILVER
MINES LIMITED

Ord Minnett
East Coast Mining Conference
Presentation - March 2022

Disclaimer

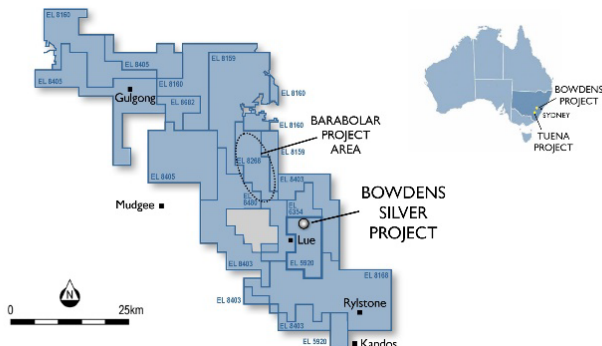
The material in this presentation contains certain forecasts and forward-looking information, including regarding possible or assumed future performance or potential growth of Silver Mines Limited (“SVL”). Such information is not a guarantee of future performance and involves unknown risks and uncertainties, as well as other factors, many of which are beyond the control of SVL. Actual results and developments may differ materially from those expressed or implied by these forward-looking statements depending on a variety of factors.

No representation or warranty, expressed or implied, is made or given by or on behalf of SVL, any of SVL’s directors, or any other person as to the accuracy or completeness or fairness of the information or opinions contained in this presentation and no responsibility or liability is accepted by any of them for such information or opinions or for any errors, omissions, misstatements, negligent or otherwise, or for any communication written or otherwise, contained or referred to in this presentation.

Accordingly, neither SVL nor any of the SVL directors, officers, employees, advisers, associated persons or subsidiary undertakings shall be liable for any direct, indirect or consequential loss or damage suffered by any person as a result of relying upon the statement or as a result of any admission in, or any document supplied with, this presentation or by any future communications in connection with such documents and any such liabilities are expressly disclaimed.

Nothing in this material should be construed as either an offer to sell or a solicitation of an offer to buy or sell securities.

- ✓ **The Bowdens Silver Project** is located in central New South Wales, Australia.
- ✓ The consolidated project is 100% held and the area comprises **1,950km² (480,000 acres)** of titles covering approximately 80km of strike of the highly mineralised Rylstone Volcanics.
- ✓ The Bowdens Silver Project is the **largest undeveloped silver deposit in Australia and one of the largest in the world** with substantial resources and a considerable body of high quality technical work already completed.



- ✓ In early 2021, the Company concluded a successful equity placement to raise A\$30 million well supported by Australian and North American institutional investors.
- ✓ 12,000 shareholders with trading averaging around 6 million shares a day.

	AUD	USD
Shares on Issue (m)	1,291.8	1,291.8
Share Price (\$)	0.25	0.19
Undiluted Market Capitalisation (\$m)	323.0	224.2
Cash (\$m, as at end December 2021)	28.5	21.4
Enterprise Value (\$m)	294.5	220.8
Options		
ESOP @ A\$0.30 Dec 2024	9.0m	
3 Year Milestone @ A\$0.20	5.0m	

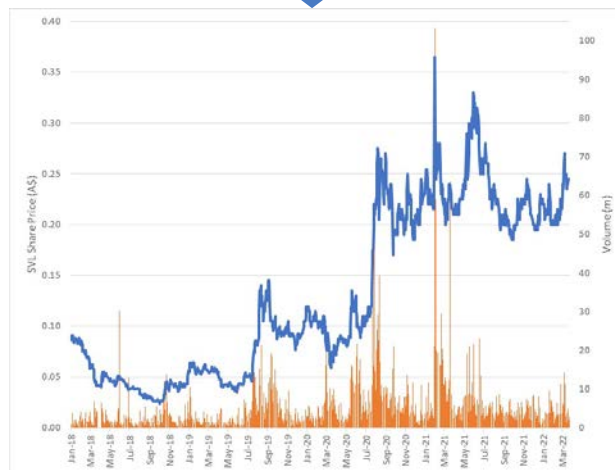
Keith Perrett	Non-Executive Chairman
Anthony McClure	Managing Director
Jonathan Battershill	Non-Executive Director

Silver Mines Limited Progress

Recent Highlights

- ✓ Lodgement of the Environmental Impact Statement and Development Application for the Bowdens Silver mine development.
- ✓ Final submission processes almost complete for Independent Planning Commission determination in second half 2022.
- ✓ No objections from any Government agency.
- ✓ Continued outstanding drilling results from Bowdens Silver.
- ✓ Four diamond drilling rigs continue on-site.
- ✓ Three zones directly underneath the planned open-cut highlight potential underground development.
- ✓ Resource assessment and Scoping Study commenced for a potential underground development.
- ✓ Well positioned for continued momentum in a very positive silver price environment.

Silver Mines Limited Share Price Graph



Bowdens Silver Project: Overview

Highlights

- ✓ The **largest silver development project in Australia**, and one of the largest globally, with a current JORC-compliant Resource base of 275Moz AgEq.
- ✓ 100% owned asset located in a **low sovereign risk jurisdiction** for mining development with ready access to existing infrastructure.
- ✓ Bowdens well-advanced, with production expected in 2024/25
 - Feasibility Study completed and government approvals submitted – received positive responses from regulators and various stakeholders suggesting there is a **clear pathway to development approval**.
- ✓ Low initial capital requirement of A\$246m / US\$185m to develop a 2Mtpa project, producing an average of 6Moz AgEq over the first 3 years of production at an average cash cost of US\$9.15/oz, underpinning strong EBITDA and cash flow.
- ✓ **Considerable exploration potential** at the Bowdens Silver Project, with extensive drilling underway (30,000m program) and confirmed significant high-grade extensions to mineralisation close to mine.

Timeline of Major Milestones

- September 2017**
Mineral Resource complete (275 Moz AgEq)
- May 2018**
Ore Reserve complete (97 Moz AgEq)
- June 2018**
Feasibility Study complete
- May 2020**
EIS Complete, DA Submission
- 2021 – 2022**
Approval Processes & Optimisation

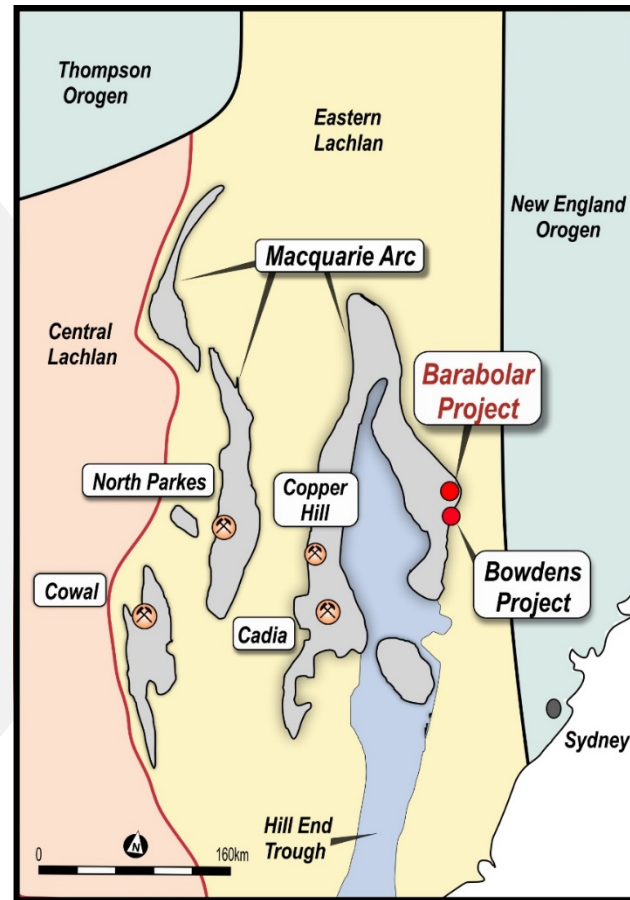
Reserves and Resources⁽¹⁾

	Tonnes	Grade				Contained Metal			
		Ag g/t	Zn %	Pb %	AgEq g/t	Ag Moz	Zn kt	Pb kt	AgEq Moz
Ore Reserve	30	69	0.44	0.32	101	66	131	95	97
Mineral Resource	128	40	0.38	0.26	67	163	486	333	275

Notes: (1) Calculations have been rounded to the nearest 100,000 t, 0.1 g/t silver and 0.01% zinc and lead grades respectively. The Ore Reserve is reported by economic cut-off grade with appropriate consideration of modifying factors including costs, geotechnical considerations, mining and process recoveries and metal pricing. Bowdens' silver equivalent: Ag Eq (g/t) = Ag (g/t) + 33.48*Pb (%) + 49.61*Zn (%) calculated from prices of US\$20/oz silver, US\$1.50/lb zinc, US\$1.00/lb lead and metallurgical recoveries of 85% silver, 82% zinc and 83% lead estimated from test work commissioned by Silver Mines Limited.

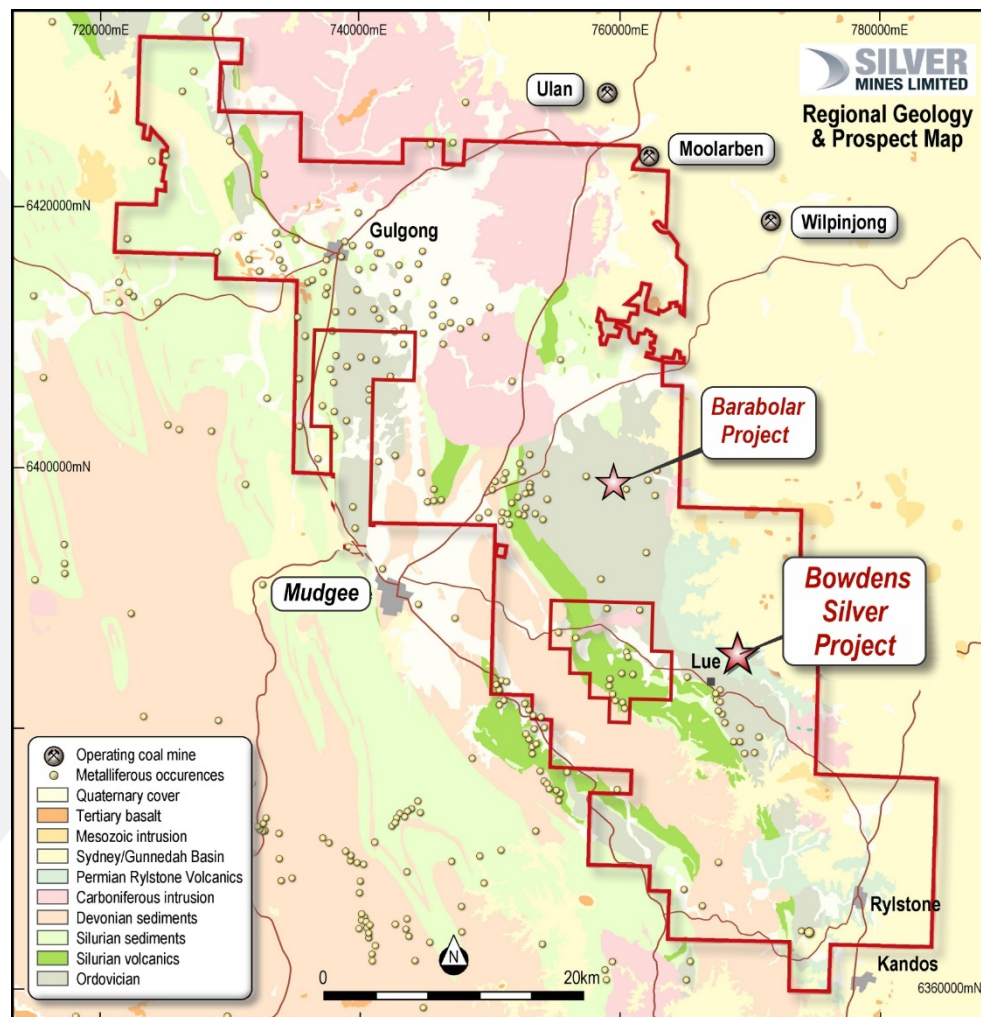
Bowdens Silver Project: Lachlan Fold Belt Geology

- The Ordovician Macquarie Arc/Lachlan Fold Belt of Eastern Australia contains preserved porphyry volcanic arc environments.
- Macquarie Arc of NSW contains world-class;
 - Cadia/Ridgeway,
 - Cowal,
 - Northparkes and others
- The Bowdens portfolio demonstrates that the eastern limb of the Macquarie Arc has the potential for significant mineral systems.
- Substantial geological study work completed by the University of NSW.

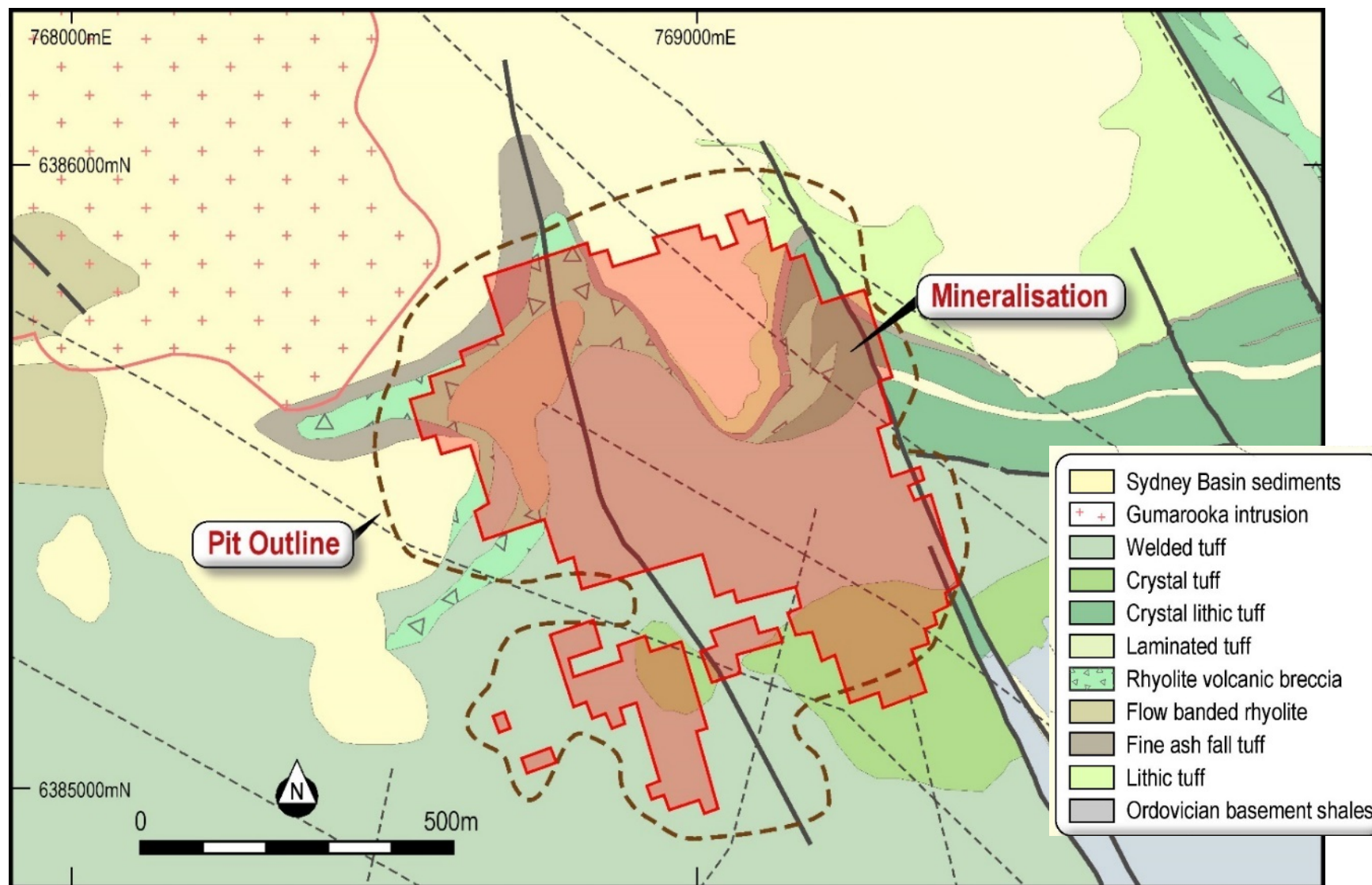


Bowdens Silver Project: Regional Geology

- **Extensive tenement holding** (1,950 km² = 480,000 acres) 100% controlled by Silver Mines.
- **Wide range of prospective deposit types** over different time periods (Ordovician, Siluro-Devonian, Carboniferous and Permian).
- Permian **Rylstone Volcanics** consisting of rhyolitic to dacitic pyroclastics, epiclastics and lava's with recently defined porphyritic intrusion within the deposit.
- Overlain by the Permo-Triassic Sydney Basin sediments (< 270 Ma).
- The Bowdens deposit is a **low sulphidation, carbonate silver-base metal-gold epithermal system**.
- Vein types include – **breccia, stringer, dissemination, banded and colloform** textured veins.
- Likely the mineralisation age is around 295 Ma.



Bowdens Silver Mine Geology



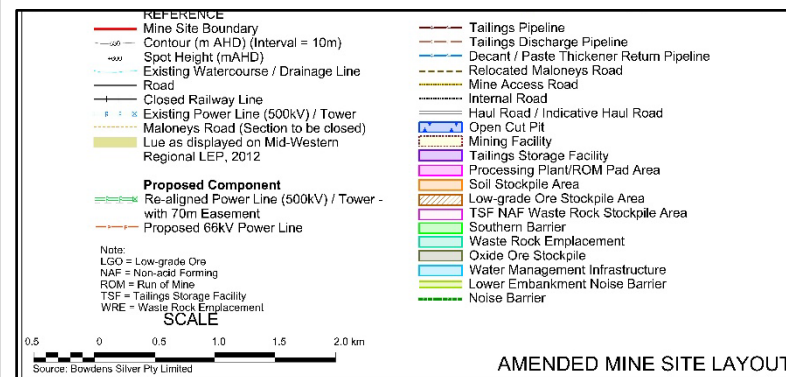
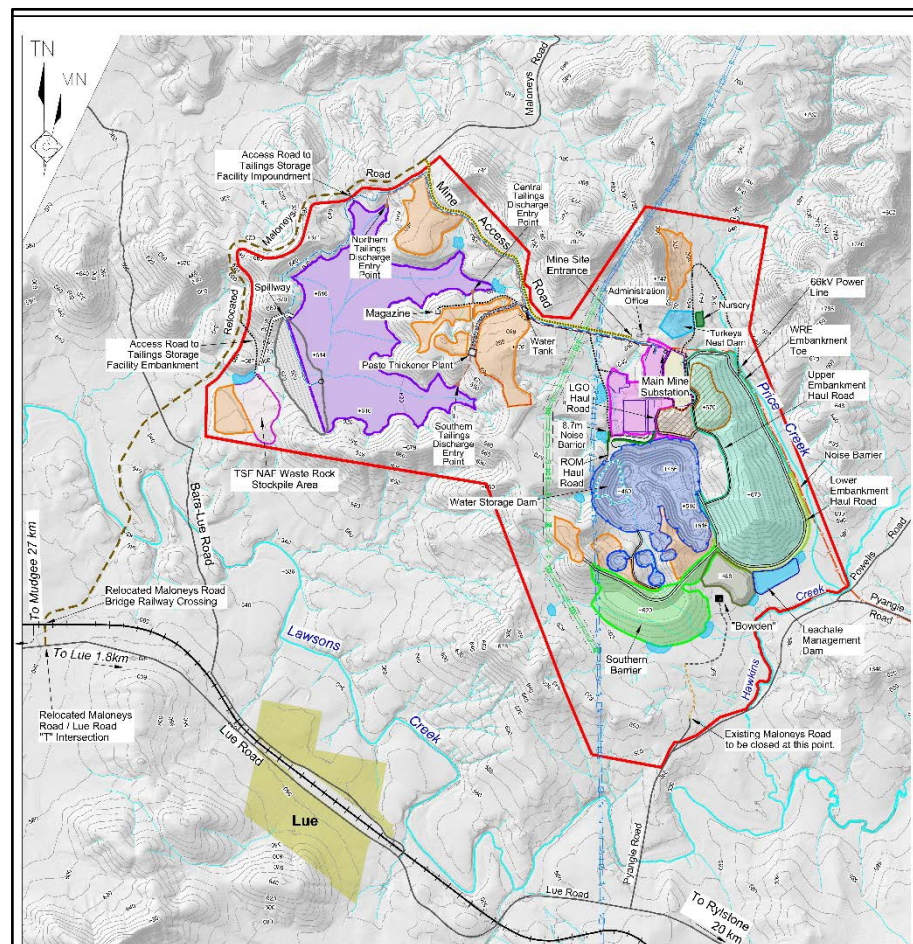
Bowdens Silver Project: Study Work

	Unit	Feasibility Upside Case ²		Feasibility Base Case ¹	
Physical Metrics					
Production Life	Years	16.5		16.5	
Ore Mined	Mt	29.9		29.9	
Waste Mined	Mt	48.2		48.2	
W:O Strip Ratio	x	1.60		1.60	
Ag Recovered in Concentrate	Moz	52.91		52.91	
Zn Recovered in Concentrate	kt	108.0		108.0	
Pb Recovered in Concentrate	kt	79.3		79.3	
Financial Metrics		AUD	USD	AUD	USD
Revenue	\$m	2,162.0	1,621.5	1,899.5	1,424.7
Operating Expenses	\$m	1,353.9	1015.5	1,340.8	1,005.6
Operating Margin	\$m	808.0	606.0	558.7	419.0
Capital Costs		AUD	USD	AUD	USD
Initial	\$m	246.0	184.5	246.0	184.5
LOM Sustaining	\$m	53.9	40.4	53.9	40.4
Unit Costs (Silver Basis)		AUD	USD	AUD	USD
C1 Costs	\$/oz	15.52	11.64	15.47	11.60
All in Sustaining Cost (AISC)	\$/oz	17.53	13.15	17.25	12.94

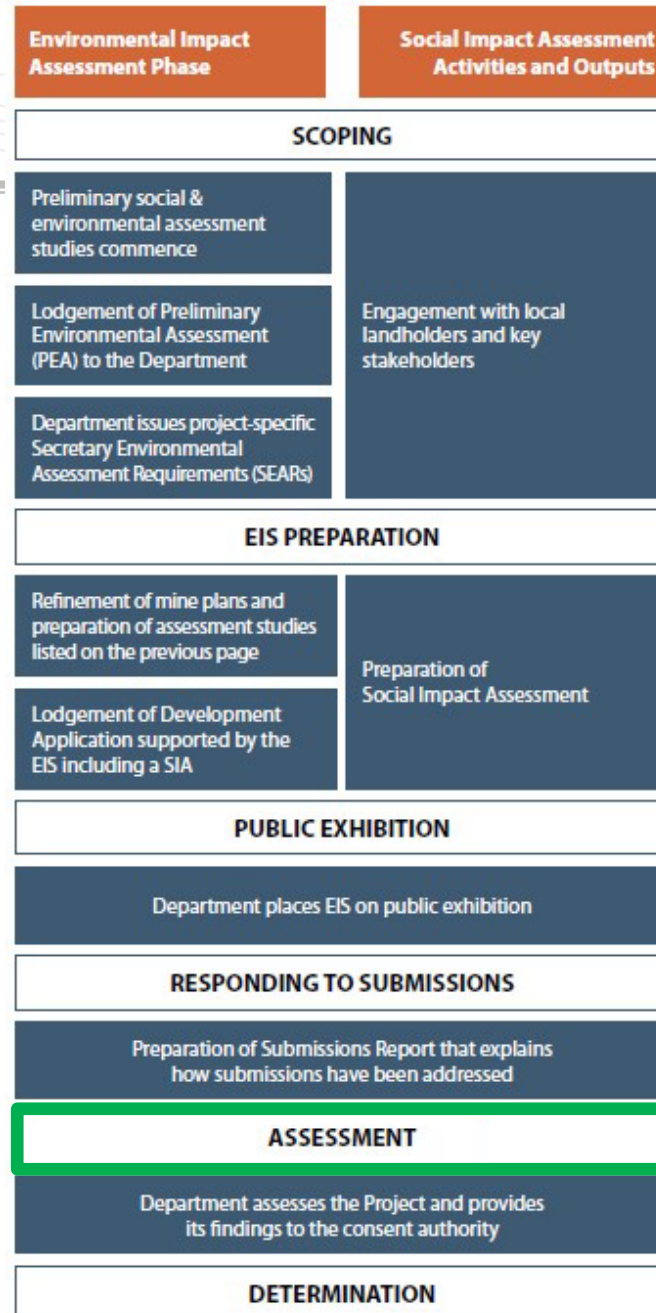
¹ 2018 Feasibility Study Base Case: Silver prices assumed were LOM averages US\$20.90/oz, a zinc price of US\$1.25/lb and a lead price of US\$1.00/lb.

² 2018 Feasibility Study Upside Case: Silver prices assumed were LOM averages US\$25.00/oz, a zinc price of US\$1.25/lb and a lead price of US\$1.00/lb.
For further information refer to ASX release of 14th June 2018.

Bowdens Silver Project: Site Layout



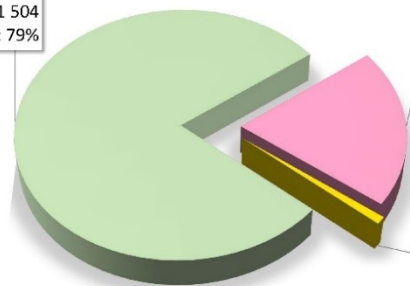
Approvals Timeline



WE ARE HERE

Community Support

Support
Responses: 1 504
Proportion: 79%

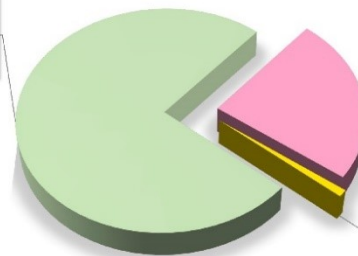


Object
Responses: 387
Proportion: 20%

Comment
Responses: 18
Proportion: 1%

All Responses - 1909

Support
Responses: 1 139
Proportion: 75%

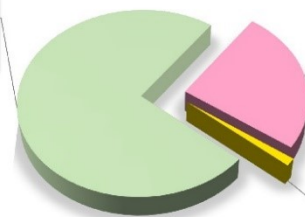


Object
Responses: 363
Proportion: 24%

Comment
Responses: 15
Proportion: 1%

New South Wales Responses - 1517

Support
Responses: 683
Proportion: 74%



Object
Responses: 230
Proportion: 25%

Comment
Responses: 12
Proportion: 1%

Mid-Western Regional LGA Responses - 925

Note: Individual and Organisation Submitters are combined in these charts.

PROPORTION OF
SUPPORT, OPPOSITION AND COMMENT
IN NON-GOVERNMENT SUBMISSIONS

Silver Uses and Market

- Silver is the best electrical and thermal conductor among all metals.
- Demand for silver is benefiting from new applications in photovoltaic cells (for solar panels), electric vehicles, electronics, water purification, robotics, industrial automation, aerospace, pharmaceuticals, and biosciences.
- Physical silver demand is approximately 1000 million ounces per year.
- Approximately 10% of demand is utilised for production of photovoltaic cells.
- Solar power, 5G electronics and EV investment agendas are a major driver going forward.



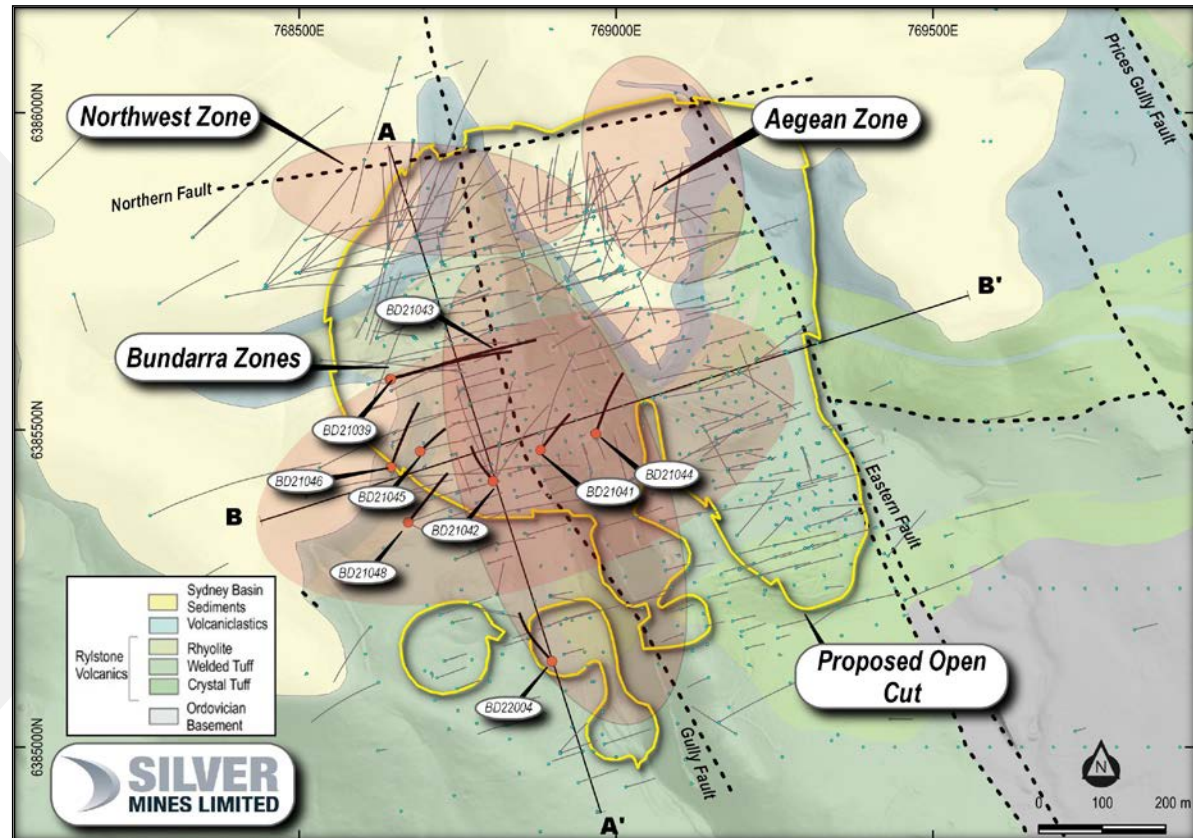
Bowdens Silver Exploration

A Major Silver System

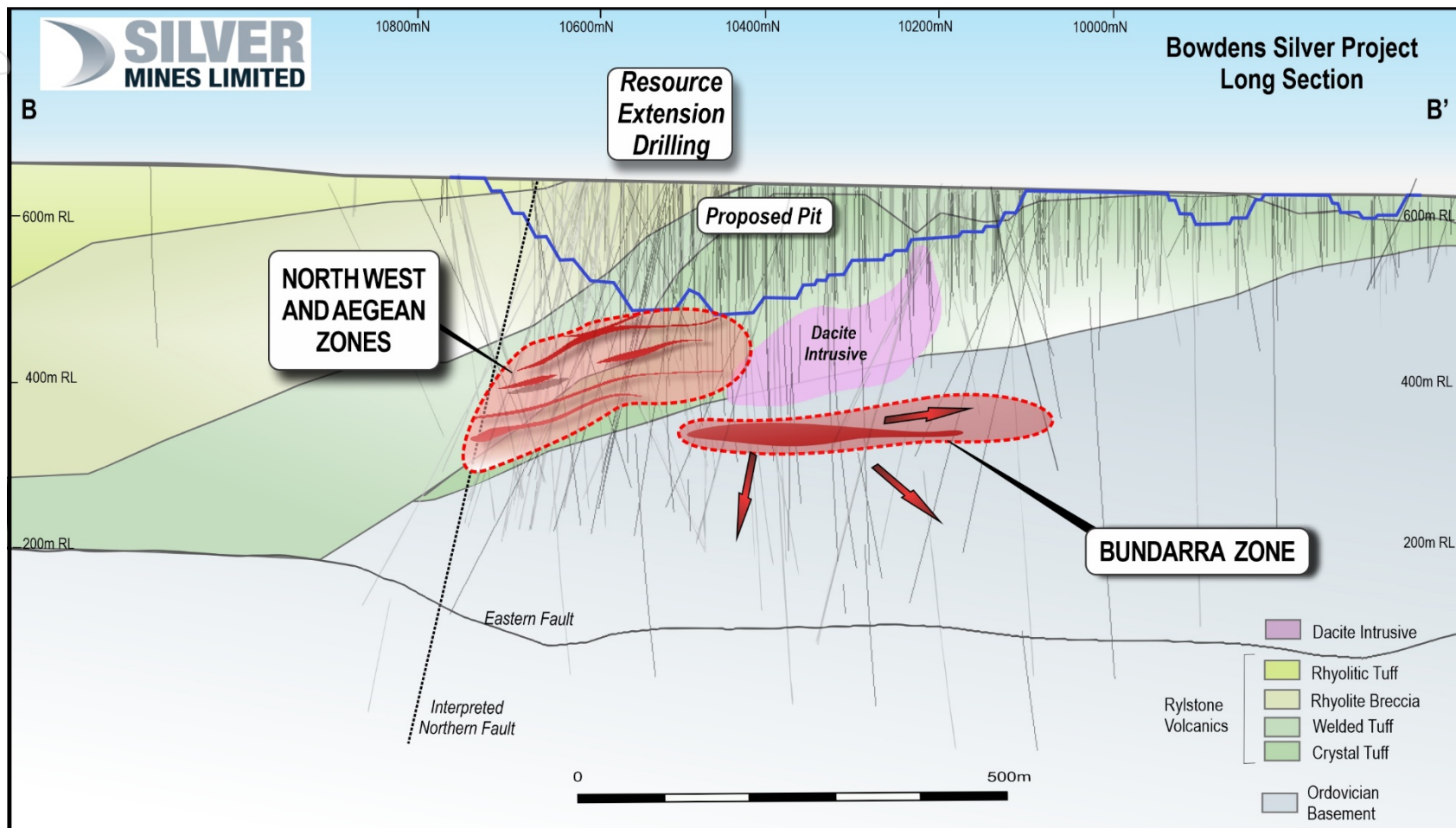


Bowdens Silver Project: Extensions

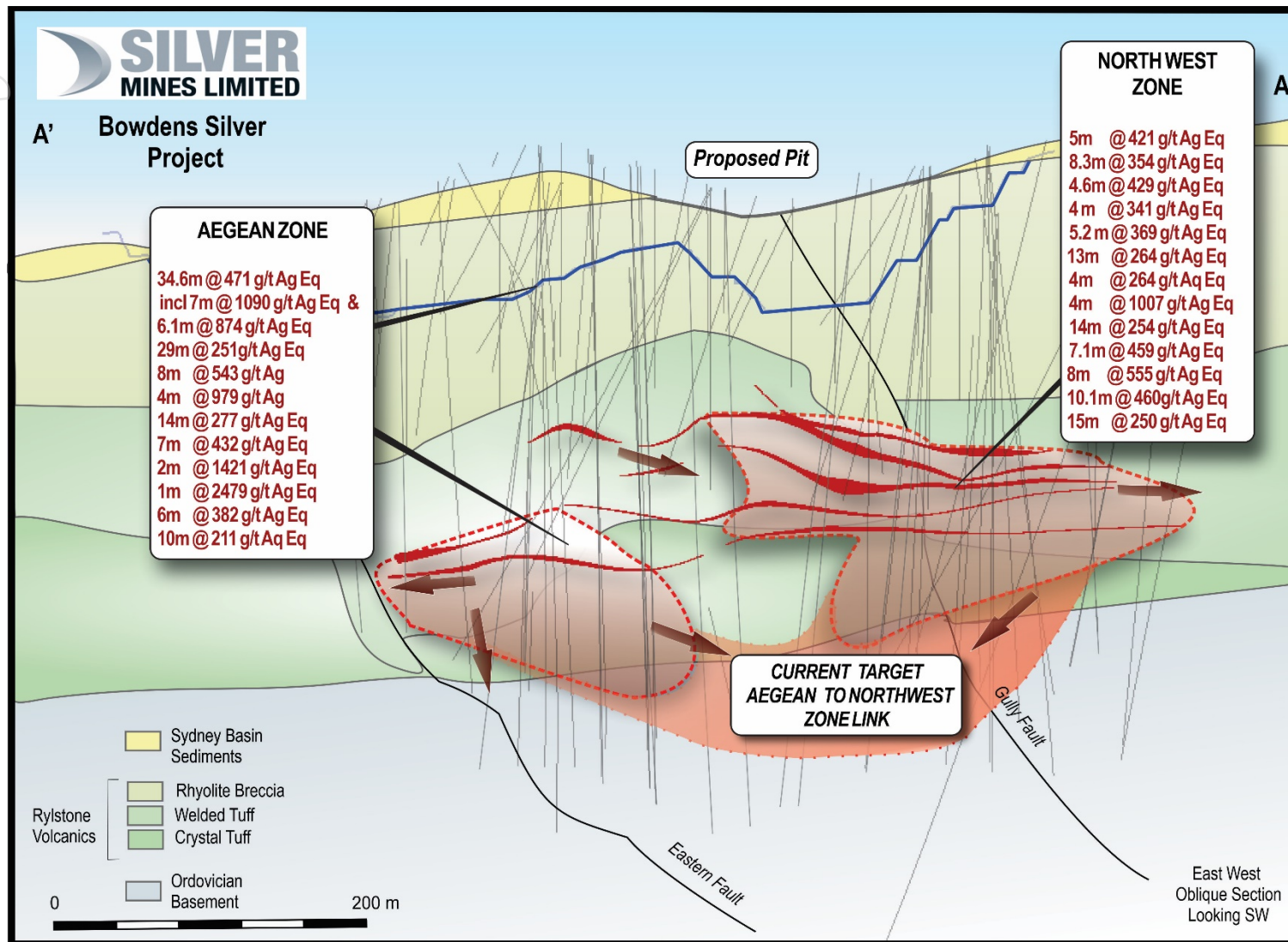
- Northwest Zone, Aegean and Bundarra Zones contains high-grade silver directly under the planned open cut pit.
- Current drilling is demonstrating that the Northwest and Aegean Zones are likely to be connected.
- Each of the three discoveries open in several directions.
- Northern Feeder Vein identified – a substantial ultra high grade addition.



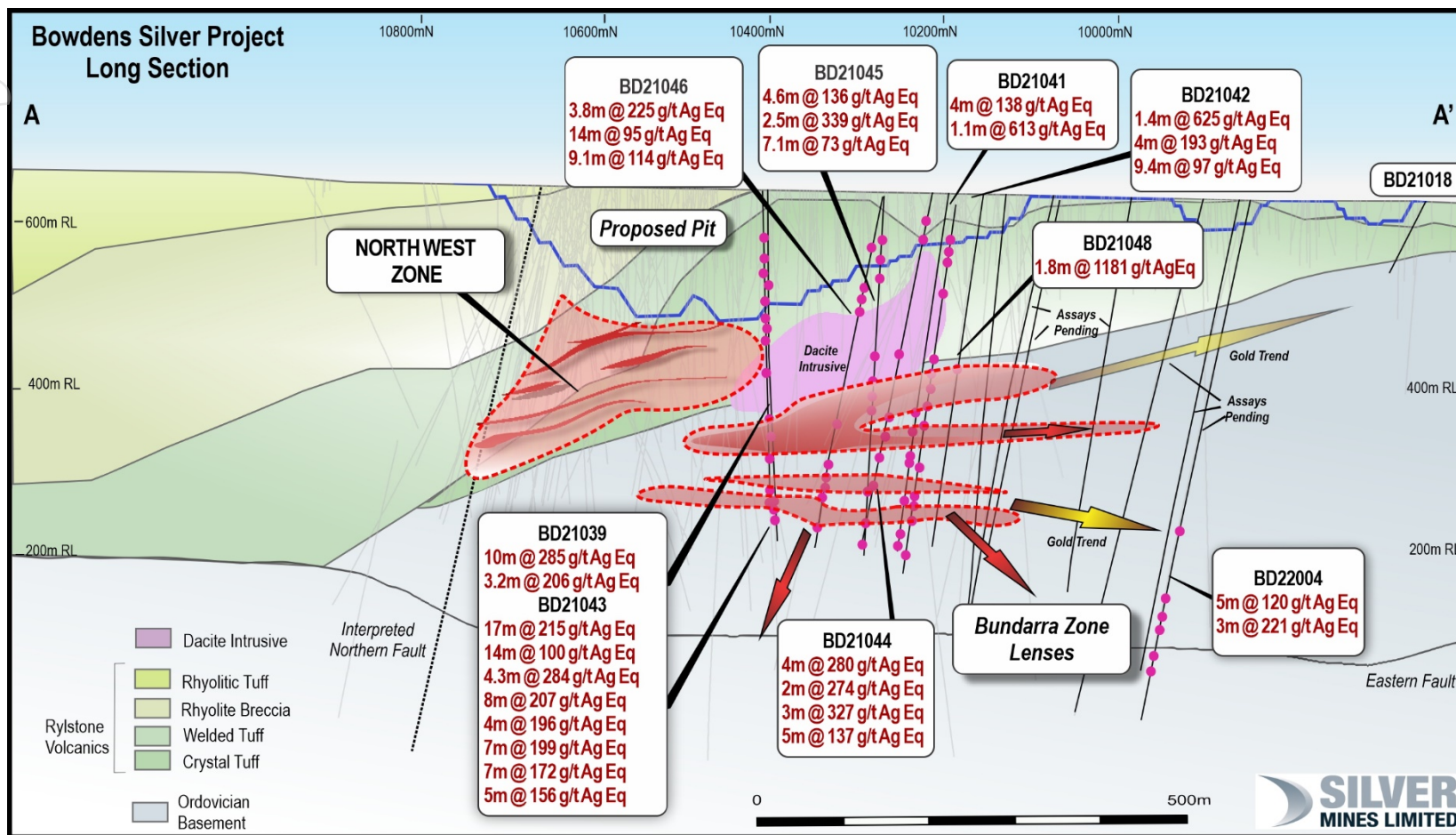
Bowdens Silver Project: Extensions (Cont'd)



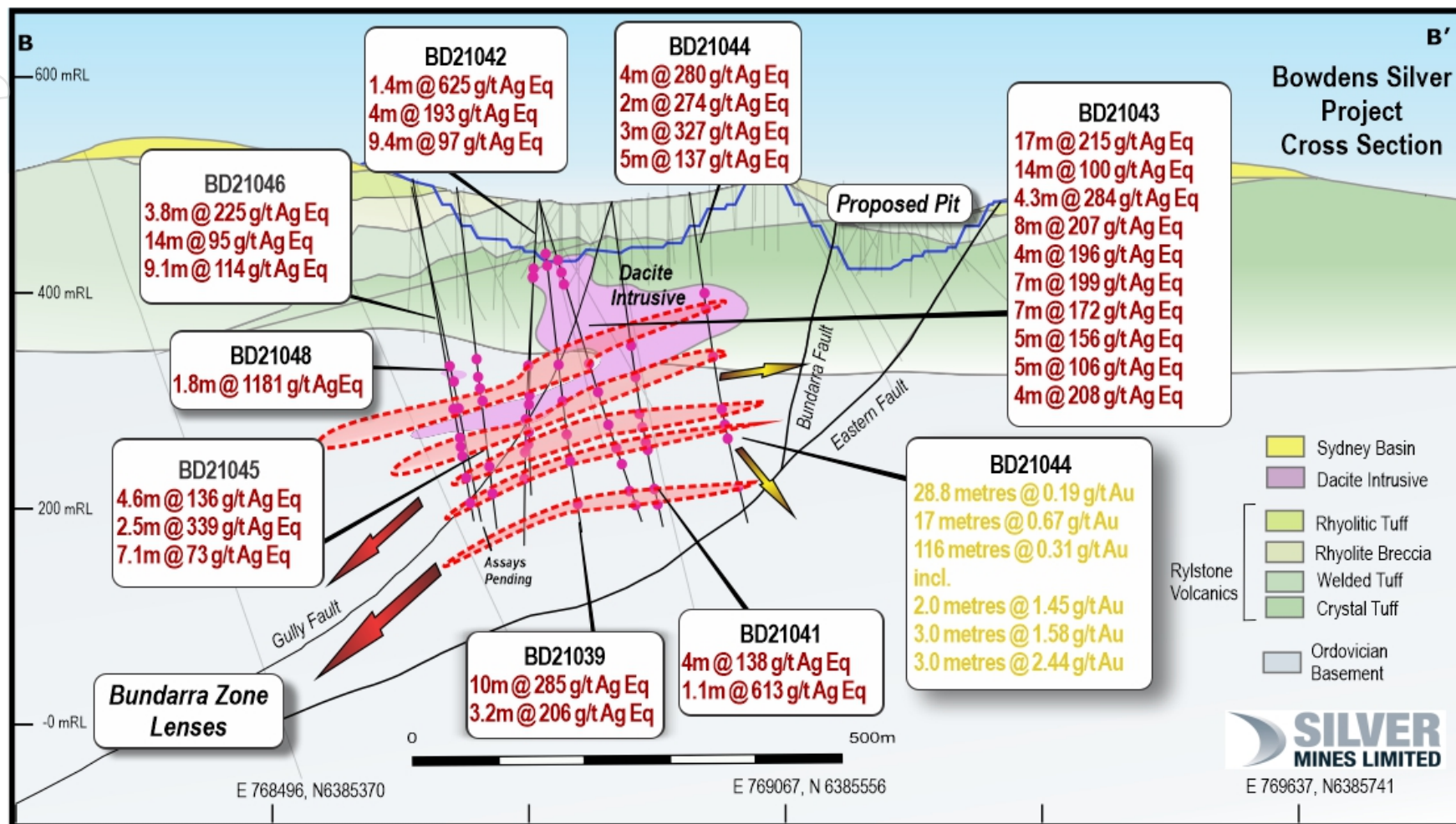
Bowdens Silver Project: Extensions (Cont'd)



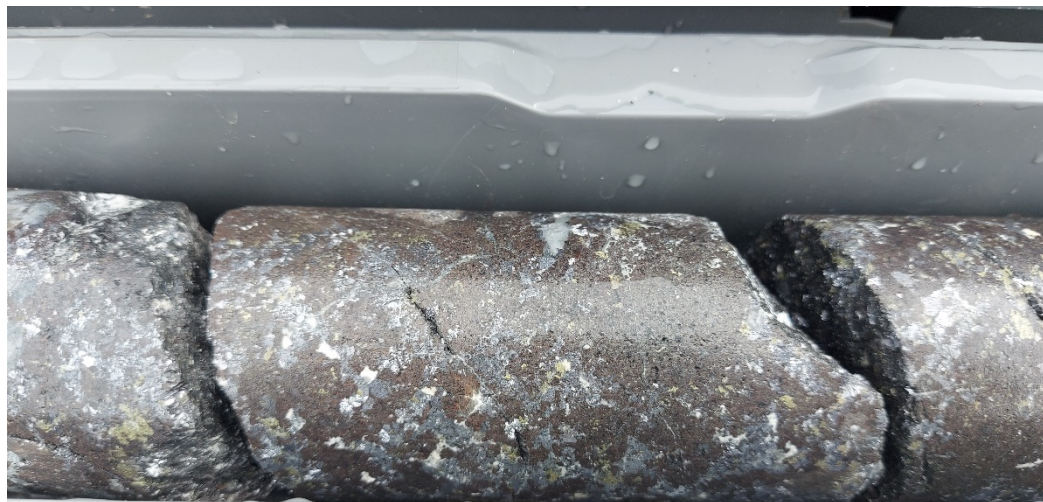
Bowdens Silver Project: Extensions (March 2022 Results)



Bowdens Silver Project: Extensions (March 2022 Results)



Bowdens Silver Project: Extensions (Cont'd)



Expanded Program and Scoping Study

- Recent drilling at the Northwest, Aegean and Bundara Zones has demonstrated considerable high-grade potential immediately beneath the proposed open-pit mine development
- 30,000 metres diamond drilling focussed on three discovery zones below the planned open-cut mine.
- 4 rigs currently on site.
- Drilling will continue through 2022.
- Underground resource assessment commenced for completion mid 2022.
- Scoping Study for potential underground mining scenarios commenced
- GR Engineering, Entech and KYSPLYmet commissioned for the study.



Bowdens Silver Project: Key Conclusions



The **largest silver development project in Australia**, and one of the largest globally, with a current JORC-compliant Resource base of 275 Moz Ag Eq (84% M+I Resource).



Bowdens well-advanced, with production expected in 2024-25 – Feasibility Study completed and government applications submitted – received positive responses from regulators and various stakeholders.



Low initial capital requirement of A\$246m / US\$185m to develop a 2Mtpa project, producing an average of 6Moz Ag p.a. over the first 3 years of production at an average cash cost of US\$9.15/oz, underpinning **strong EBITDA and cash flow**.



Considerable exploration potential at the Bowdens Silver Project, with extensive drilling (30,000 metres with 4 diamond rigs) underway and confirmed significant high-grade extensions to mineralisation close to mine. Scoping Study commenced for a potential underground development in addition to the current open-cut development.



Assets located in a **low sovereign risk jurisdiction** for mining development with **ready access to existing infrastructure**. The COVID-19 pandemic is contained in Australia, and the vaccine rollout is advanced.



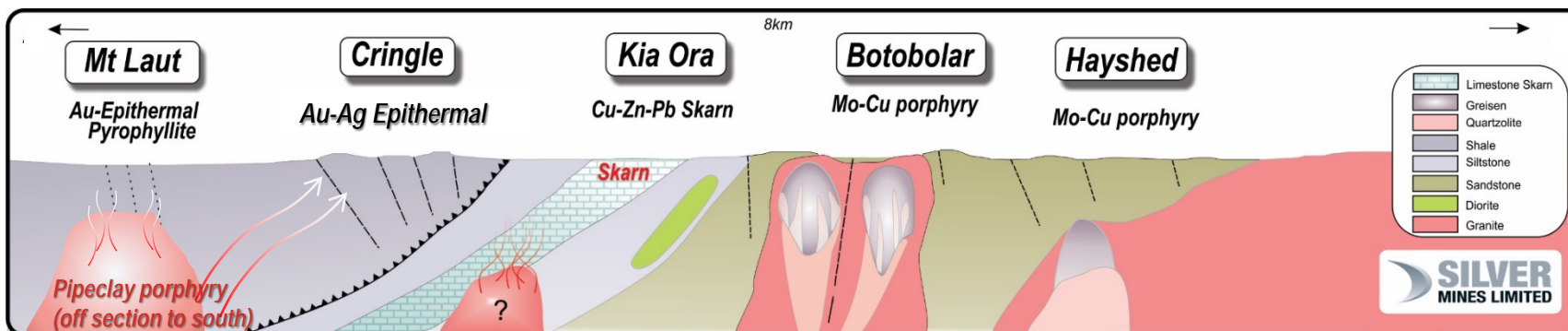
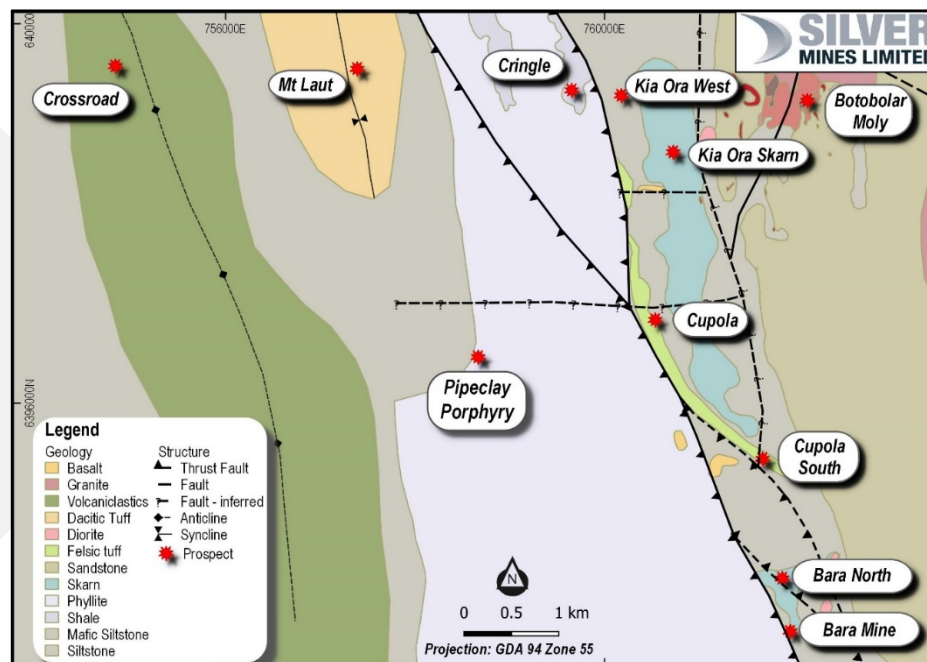
Single open-cut mine with uncomplicated mining, a low strip ratio and metallurgy with an initial mine life of 16 years.

Other Exploration Assets



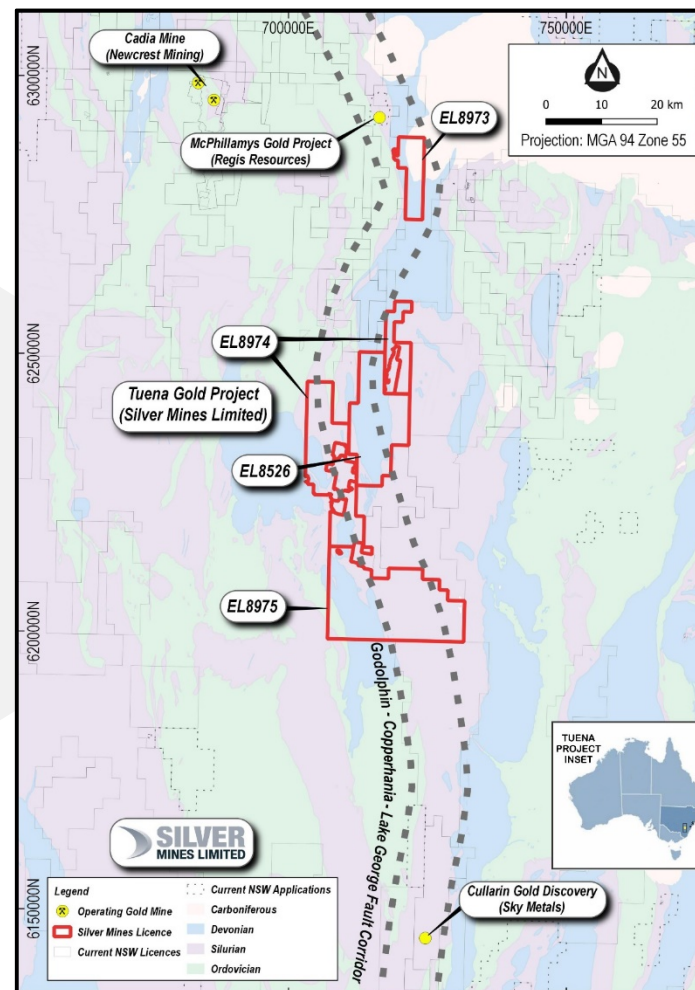
Barabolar Project: Unlocking a Major Mineralised System

- Barabolar Project area located 10 kilometres northwest of Bowdens
- 9000 x 2000 metre corridor of base-metal and precious metal soil anomalies
- Mineralised skarn mapped over 5000 by 800 metres
- Porphyry system type alteration assemblages
- Several high order prospects:
 - Cringle Au-Ag epithermal
 - Kia Ora Skarn (and proximal porphyry): Cu-Ag-Zn-Au
 - Botobolar / Hayshed: abundant coarse molybdenite in associated felsic porphyry
- Induced Polarisation (IP) program (~30 line kms) completed and substantial gravity survey completed with interpretation being finalised
- Drilling program June quarter 2022



Tuena Gold Project

- Located south of Blayney in New South Wales.
- Historic goldfield with minimal exploration work in the modern era.
- Clear geological analogies to the McPhillamys Gold Project (2.0 Moz gold).
- Mineral system and old gold workings extend over at least 6 kilometres of strike.
- Reconnaissance mapping is identifying previously unrecorded historic workings and shear zones with substantial width.
- Airborne magnetics and radiometrics survey completed.
- Tenement position expanded with 747 km² of exploration licenses, all granted, all 100%.
- Results from the 4,000m initial drilling program included:
 - 4.0m @ 6.88 g/t gold from 98m in TRC20010.





Anthony McClure
Managing Director
Silver Mines Limited
+61 2 8316 3997



Appendix 1 – Bowdens Silver Resource (as at September 2017)

30 g/t Ag Eq Cut	Tonnes (Mt)	Silver Eq. (g/t)	Silver (g/t)	Zinc (%)	Lead (%)	Million Ounces Silver	Million Ounces Silver Eq.
Measured	76	72	45	0.37	0.25	111	175
Indicated	29	59	31	0.38	0.25	29	55
Measured & Indicated	105	68	41	0.37	0.25	140	230
Inferred	23	60	31	0.40	0.28	23	45
Total	128	67	40	0.38	0.26	163	275

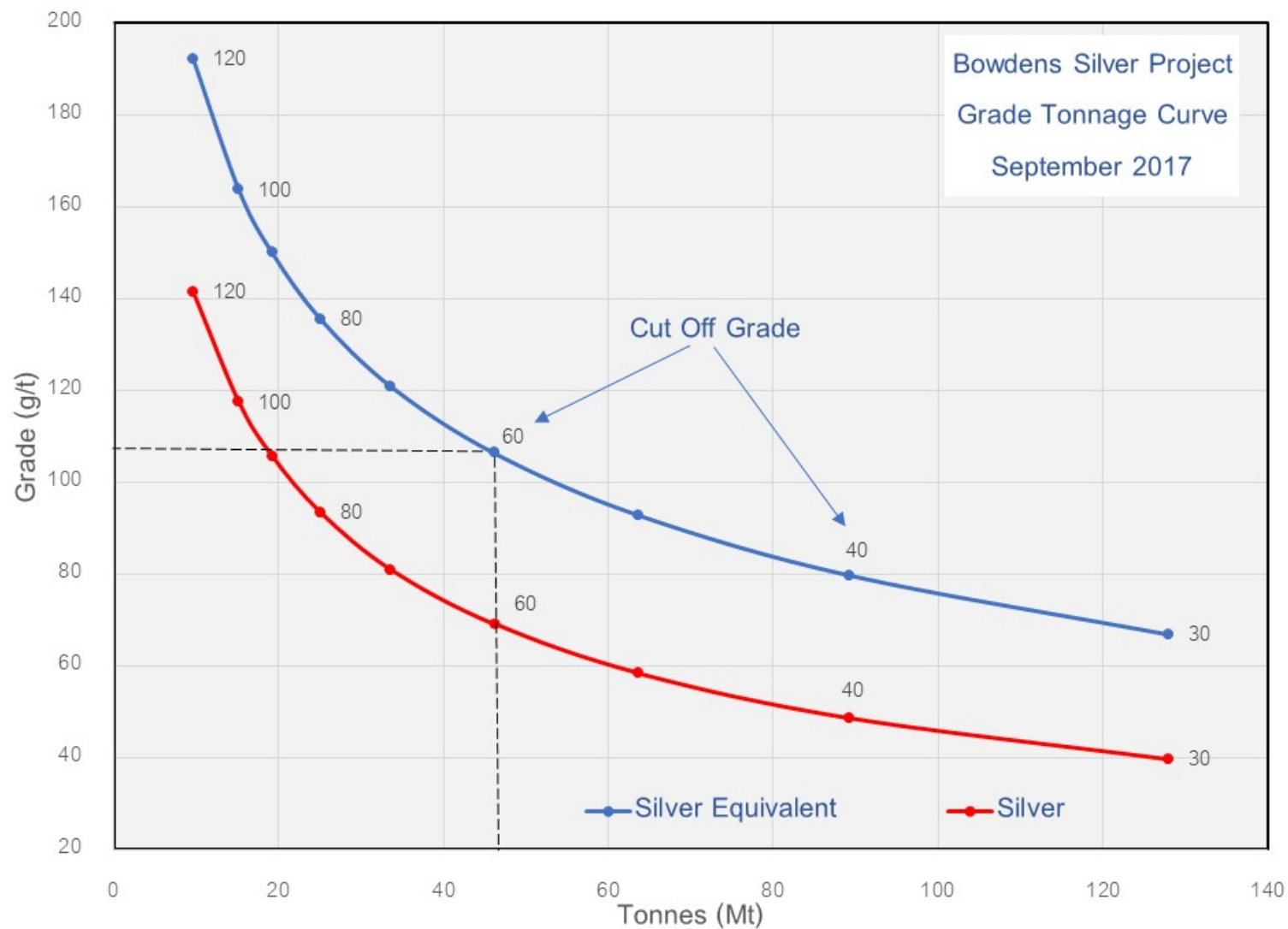
The Bowdens Mineral Resource Estimate has been compiled by H&S Consultants Pty Ltd using Multiple Indicator Kriging and the reporting is compliant with the 2012 JORC Code and Guidelines. For full disclosures refer to the Silver Mines Limited announcement of 19 September 2017.

1. Bowdens' silver equivalent: $\text{Ag Eq (g/t)} = \text{Ag (g/t)} + 33.48 \times \text{Pb (\%)} + 49.61 \times \text{Zn (\%)}$ calculated from prices of US\$20/oz silver, US\$1.50/lb zinc, US\$1.00/lb lead and metallurgical recoveries of 85% silver, 82% zinc and 83% lead estimated from test work commissioned by Silver Mines Limited.
2. Bowdens Silver Mineral Resource Estimate is reported to a 30g/t Ag Eq cut off and extends from surface and is trimmed to 300 metres RL which is approximately 320 metres below surface representing a potential volume for open-pit optimisation models.
3. In the Company's opinion, the silver, zinc and lead included in the metal equivalent calculations have a reasonable potential to be recovered and sold.
4. Variability of summation may occur due to rounding.

Appendix 2 - Bowdens Silver Resource (as at September 2017)

Cut off g/t Ag Eq	Tonnes (Mt)	Silver Eq. (g/t)	Silver (g/t)	Zinc (%)	Lead (%)	Million Ounces Silver	Million Ounces Silver Eq.
0	397.2	30.7	17.6	0.18	0.12	225	392
10	261.7	43.7	25.2	0.26	0.17	212	368
20	185.2	54.6	31.7	0.32	0.21	189	325
30	127.9	66.8	39.6	0.38	0.26	163	275
40	89.2	79.7	48.6	0.43	0.29	139	229
50	63.6	92.8	58.4	0.47	0.33	119	190
60	46.1	106.3	69.1	0.51	0.36	102	158
70	33.7	120.8	80.9	0.54	0.39	87	131
80	25.1	135.5	93.4	0.57	0.42	75	109
90	19.2	149.9	105.6	0.59	0.45	65	93
100	15.1	163.7	117.5	0.62	0.47	57	80
120	9.6	192.3	141.4	0.67	0.53	44	59

Bowdens Silver Resource



Appendix 3 – Bowdens Silver Ore Reserve (as at May 2018)

	Tonnes (Mt)	Silver Eq. (g/t)	Silver (g/t)	Zinc (%)	Lead (%)	Silver Eq. Million Ounces	Silver Million Ounces	Zinc Kilo- tonnes	Lead Kilo- tonnes
Proved	28.6	102.2	69.75	0.44	0.32	93.85	64.05	125.11	91.43
Probable	1.3	84.4	53.15	0.43	0.29	3.60	2.27	5.74	3.91
Total	29.9	101.4	69.01	0.44	0.32	97.45	66.32	130.84	95.33

The Bowdens Reserve has been compiled by AMC Consultants Pty Ltd and is based on the September 2017 Mineral Resource Estimate generated for Silver Mines by H & S Consultants Pty Ltd (see ASX announcement 19 September 2017). For full disclosures refer to the Silver Mines Limited announcement of 30 May 2018.

1. Calculations have been rounded to the nearest 100,000 t, 0.1 g/t silver and 0.01% zinc and lead grades respectively. The Ore Reserve is reported by economic cut-off grade with appropriate consideration of modifying factors including costs, geotechnical considerations, mining and process recoveries and metal pricing.
2. Bowdens' silver equivalent: $\text{Ag Eq (g/t)} = \text{Ag (g/t)} + 33.48 \times \text{Pb (\%)} + 49.61 \times \text{Zn (\%)}$ calculated from prices of US\$20/oz silver, US\$1.50/lb zinc, US\$1.00/lb lead and metallurgical recoveries of 85% silver, 82% zinc and 83% lead estimated from test work commissioned by Silver Mines Limited.

Competent Persons Statements

Ore Reserve

The information in this report that relates to Ore Reserves within the Bowdens Silver Project is based on information compiled or reviewed by Mr Adrian Jones of AMC Consultants Pty Ltd who is a consultant to the Company. Mr Jones is a member of the Member of the Australasian Institute of Mining and Metallurgy and has sufficient experience that is relevant to the style of mineralisation and type of deposit under consideration, and to the activity being undertaken, to qualify as a Competent Person as defined in the 2012 edition of the 'Australasian Code for Reporting of Exploration Results, Mineral Resources and Ore Reserves' (JORC code). Mr Jones consents to the inclusion in this report of the matters based on the information in the form and context in which it appears. Mr Jones visited the Bowdens mine site during April 2017 to review the operations, consider the conditions of the site, and assess the data collection methods and techniques used by site personnel.

The Ore Reserve has been prepared by Mr Adrian Jones, AMC Consultants Pty Ltd, after peer review of the mining section of the Feasibility Study. Other experts relied upon include H & S Consultants Pty Ltd, GR Engineering Services Limited, ATC Williams Pty Limited. and Jacobs Australia Pty Limited, for Mineral Resources, Metallurgy & Process Design and Tailing Storage Facility design. Work on environmental, marketing and logistics and the financial modelling were undertaken by other consultants on behalf of the Company and certified by representatives of Silver Mines.

Mineral Resources

The information in this report that relates to Mineral Resources is based on work compiled by Mr Arnold van der Heyden who is a Director of H & S Consultants Pty Ltd. Mr van der Heyden is a Member and Chartered Professional (Geology) of the Australian Institute of Mining and Metallurgy and has sufficient experience that is relevant to the style of mineralisation and type of deposit under consideration, and to the activity being undertaken, to qualify as a Competent Person as defined in the 2012 edition of the 'Australasian Code for Reporting of Exploration Results, Mineral Resources and Ore Reserves' (JORC code). Mr van der Heyden consents to the inclusion in this report of the matters based on the information in the form and context in which it appears.

Exploration and Drill Results

The information in this report that relates to mineral exploration drill results from the Bowdens Silver Project and Tuena Gold Project is based on information compiled or reviewed by Dr Darren Holden who is an advisor to the company. Dr Holden is a member of the Australasian Institute of Mining and Metallurgy and has sufficient experience that is relevant to the style of mineralisation and type of deposit under consideration, and to the activity being undertaken, to qualify as a Competent Person as defined in the 2012 edition of the 'Australasian Code for Reporting of Exploration Results, Mineral Resources and Ore Reserves' (JORC code). Dr Holden consents to the inclusion in this report of the matters based on the information in the form and context in which it appears.